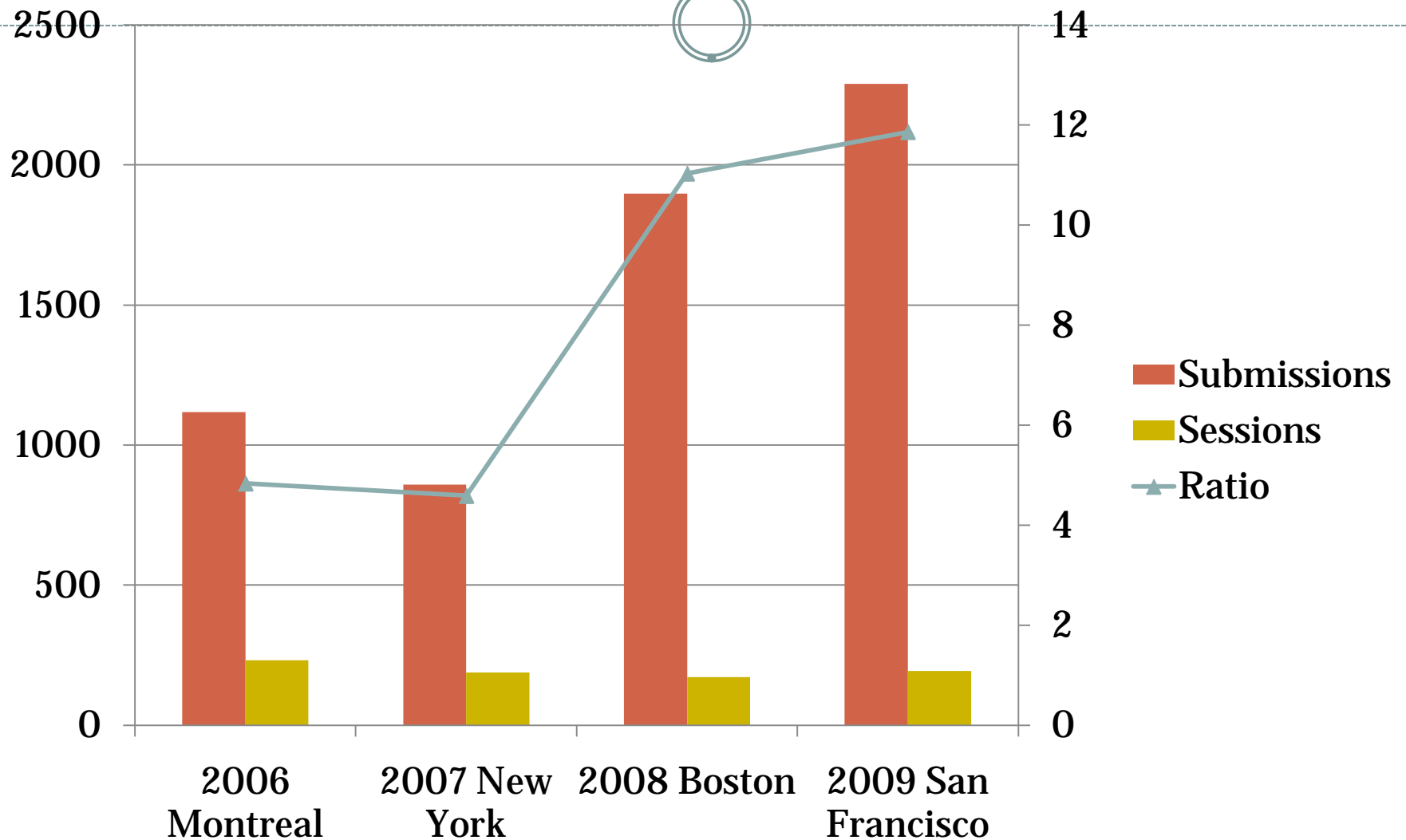


# Getting Into ASA

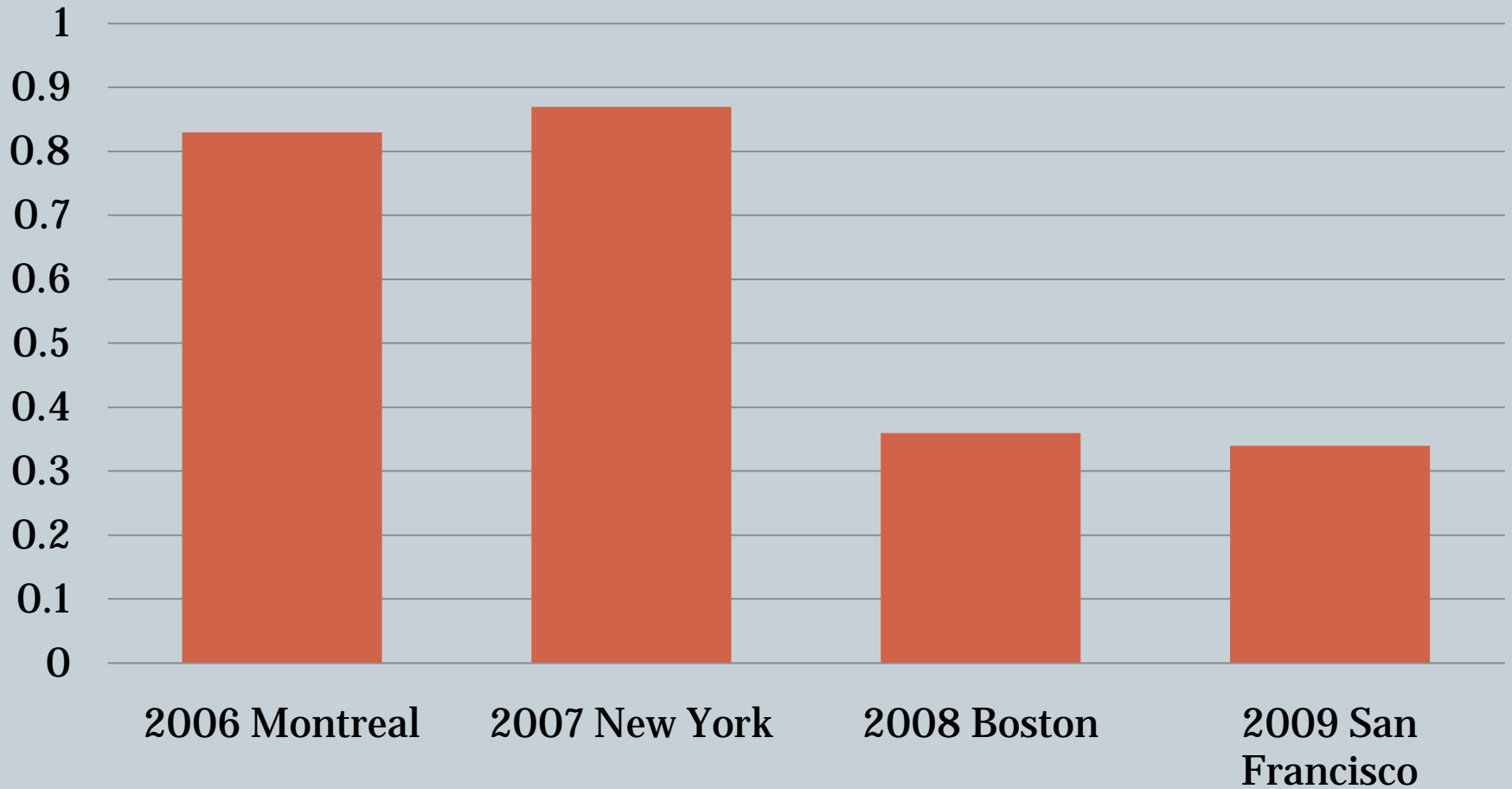


**ANALYSIS OF ASA DATA FROM 2006-2009**

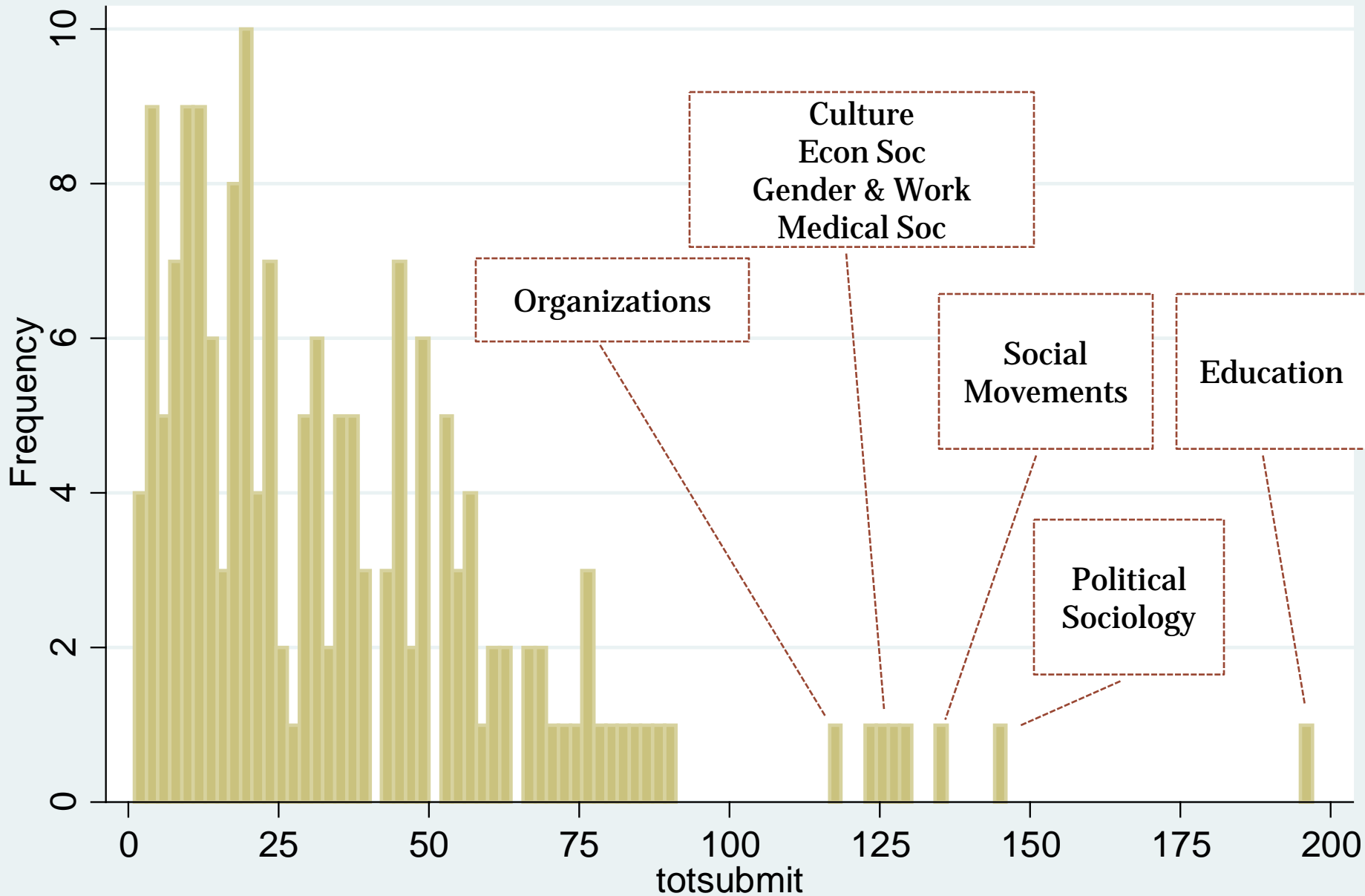
# Number of Regular Submissions (i.e. Competition) Varies by Year (Locale)



# Overall estimated probability of acceptance to ASA, by Year (Locale)



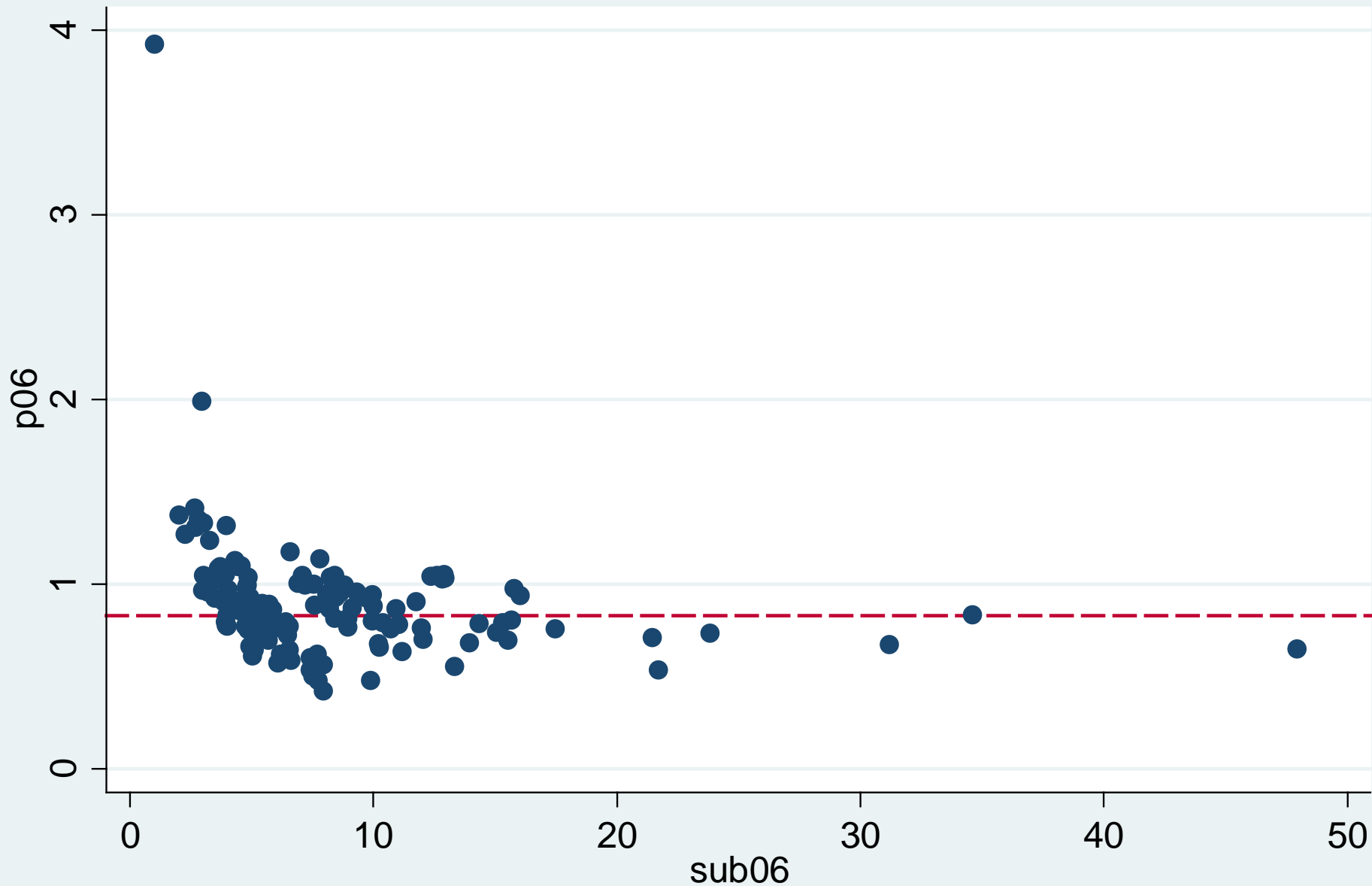
# Total Submissions to ASA by Topic 2006-2009



# Within year, probability of acceptance varies by popularity of topic

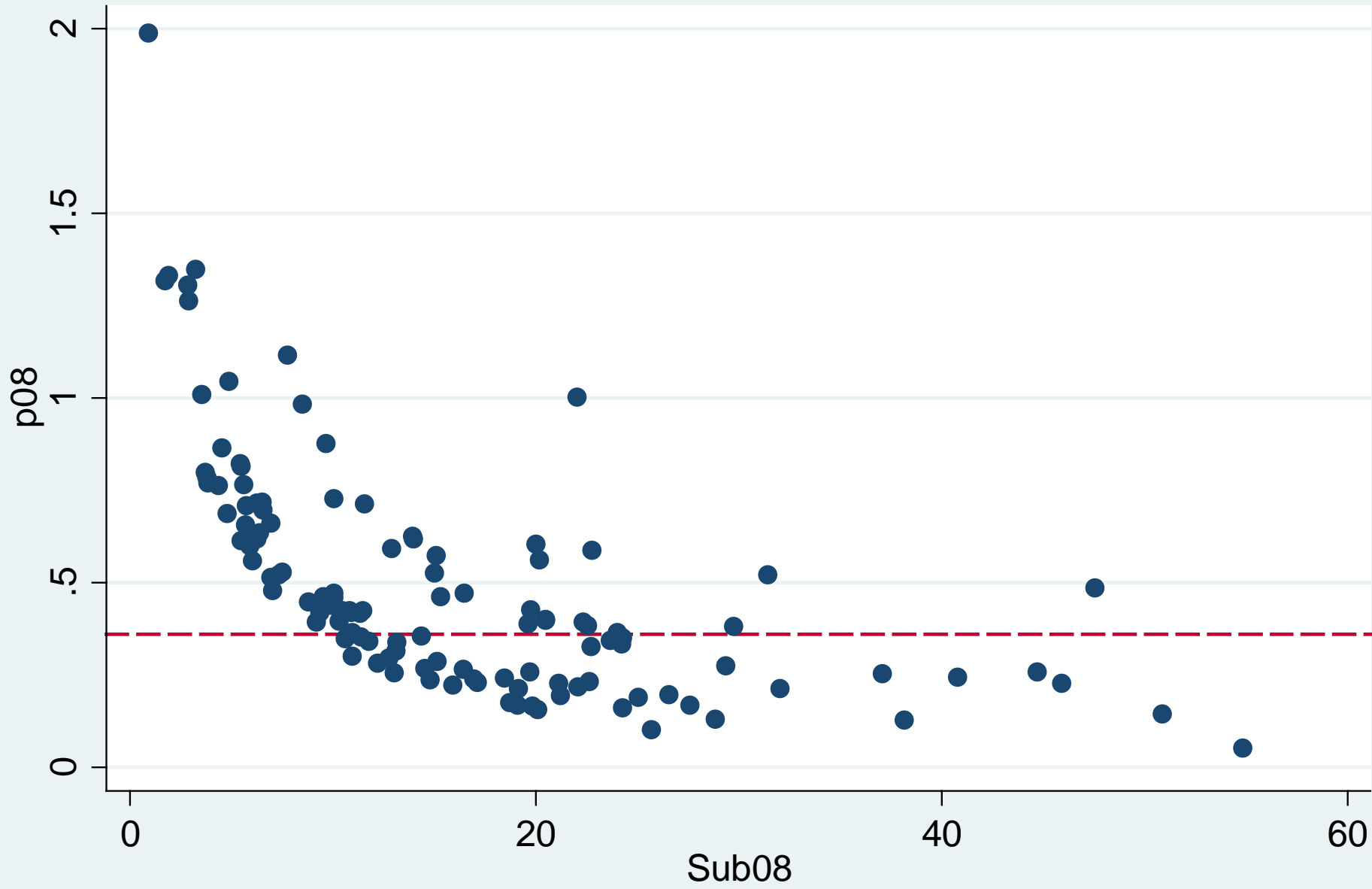


- Estimate number of slots as 4x number of sessions
- So probability equals 4 times number of sessions divided by number of submissions



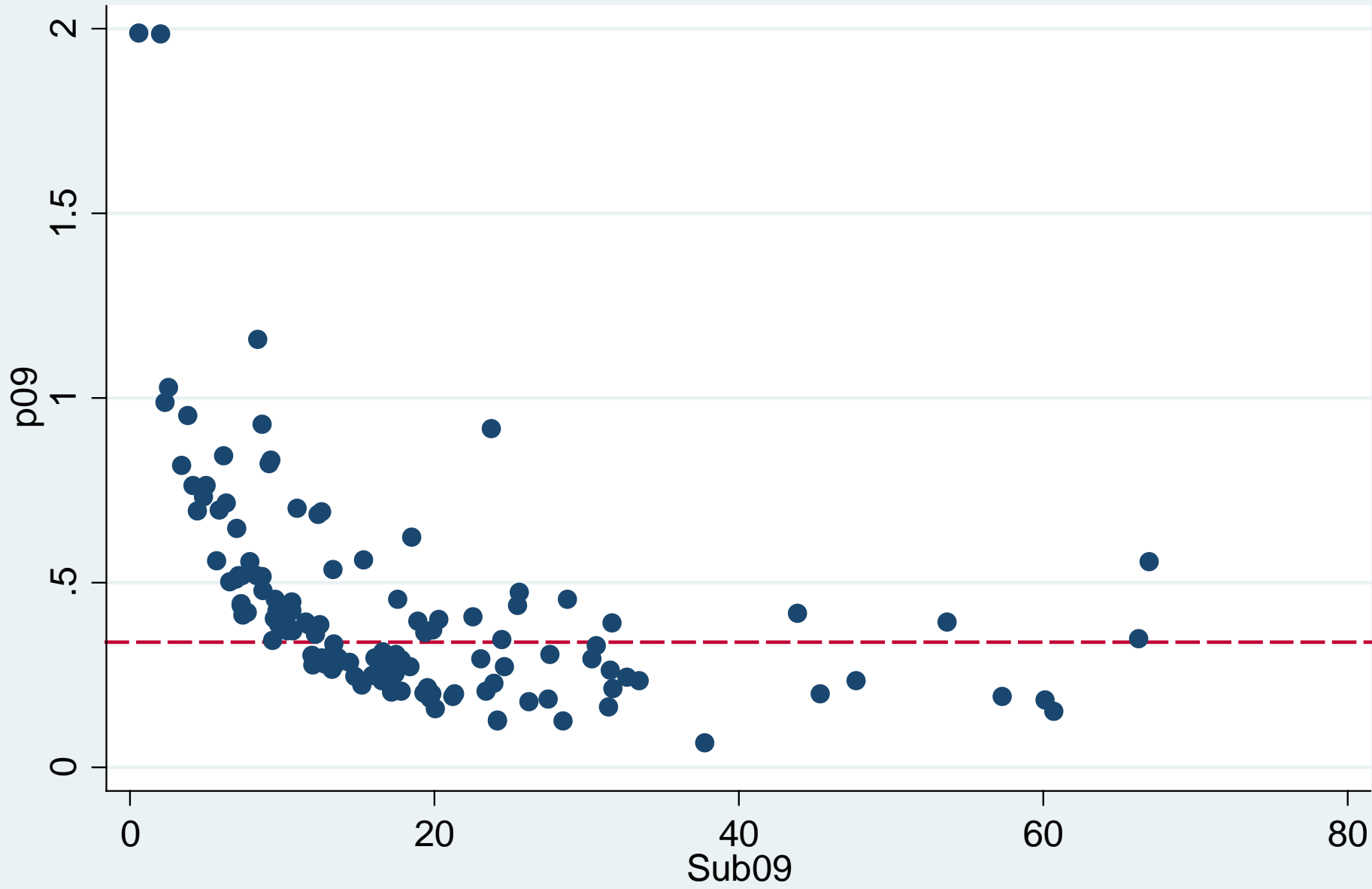
2006 Average Est Probability of Acceptance to ASA Regular Session Topic by Number of Submissions to the Topic





2008 Average Est Probability of Acceptance to ASA Regular Session Topic by Number of Submissions to the Topic

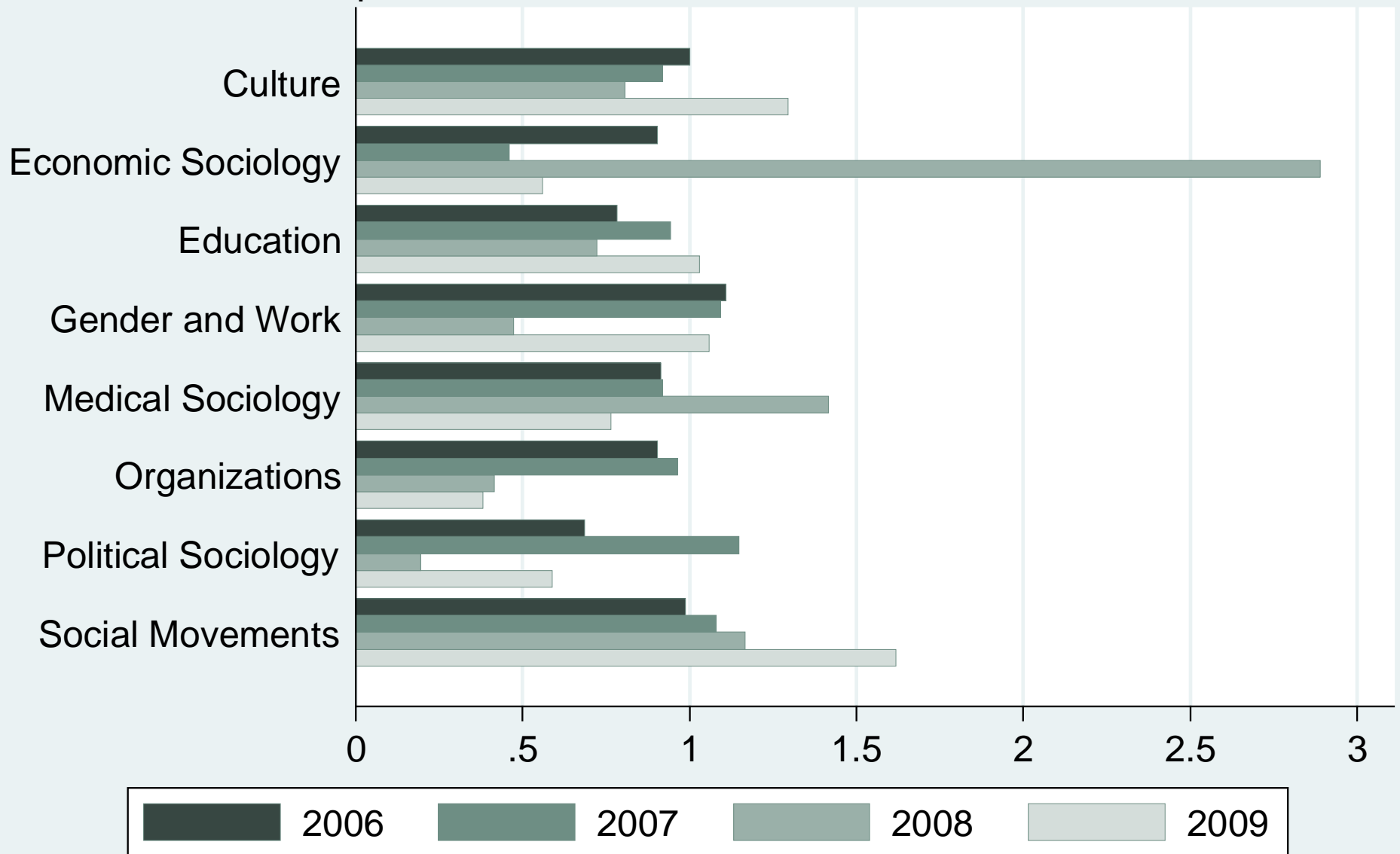




2009 Average Est Probability of Acceptance to ASA Regular Session Topic by Number of Submissions to the Topic

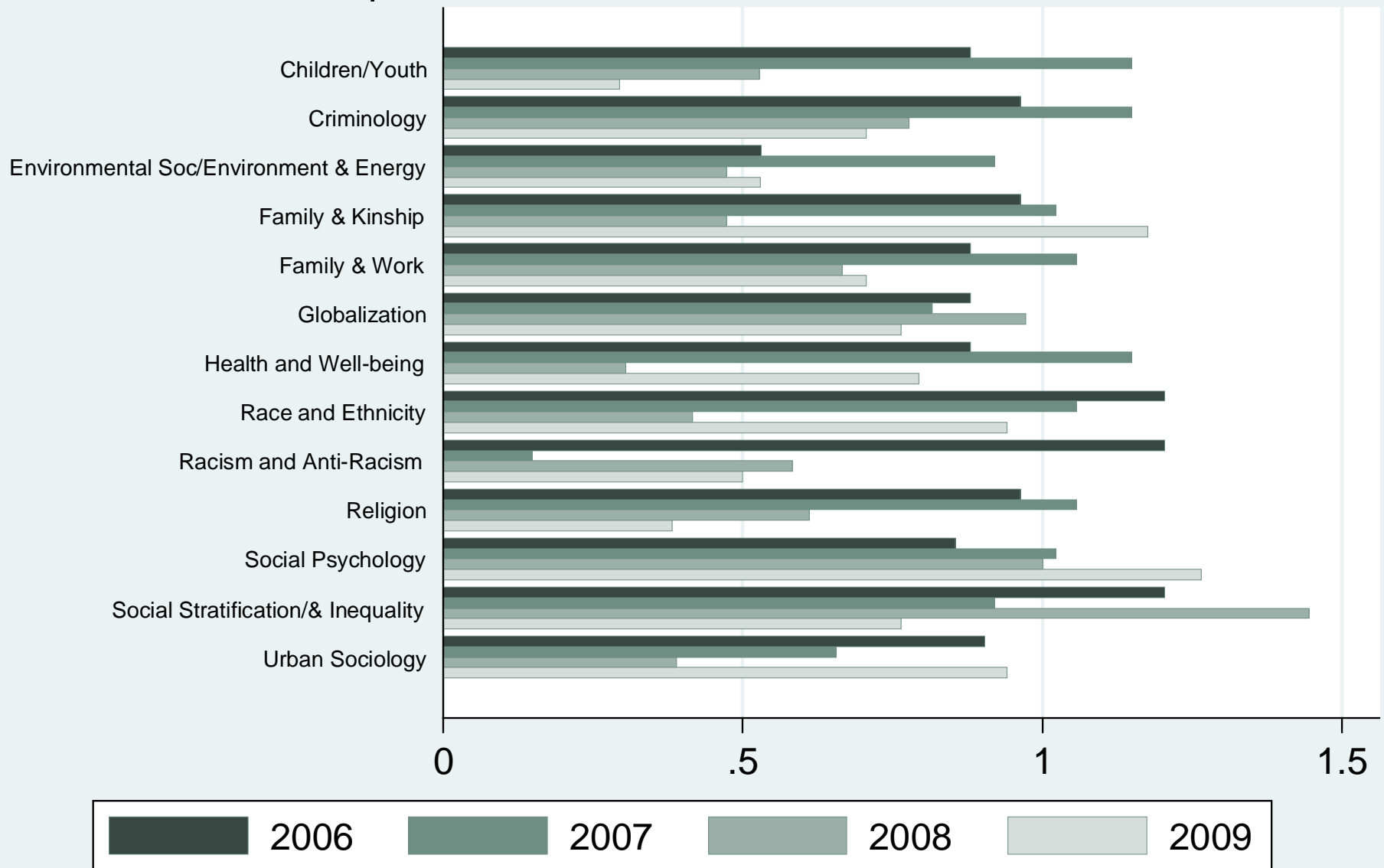
# Ratio of probability of acceptance to average for the year

Topics with at least 100 submissions 2006-9



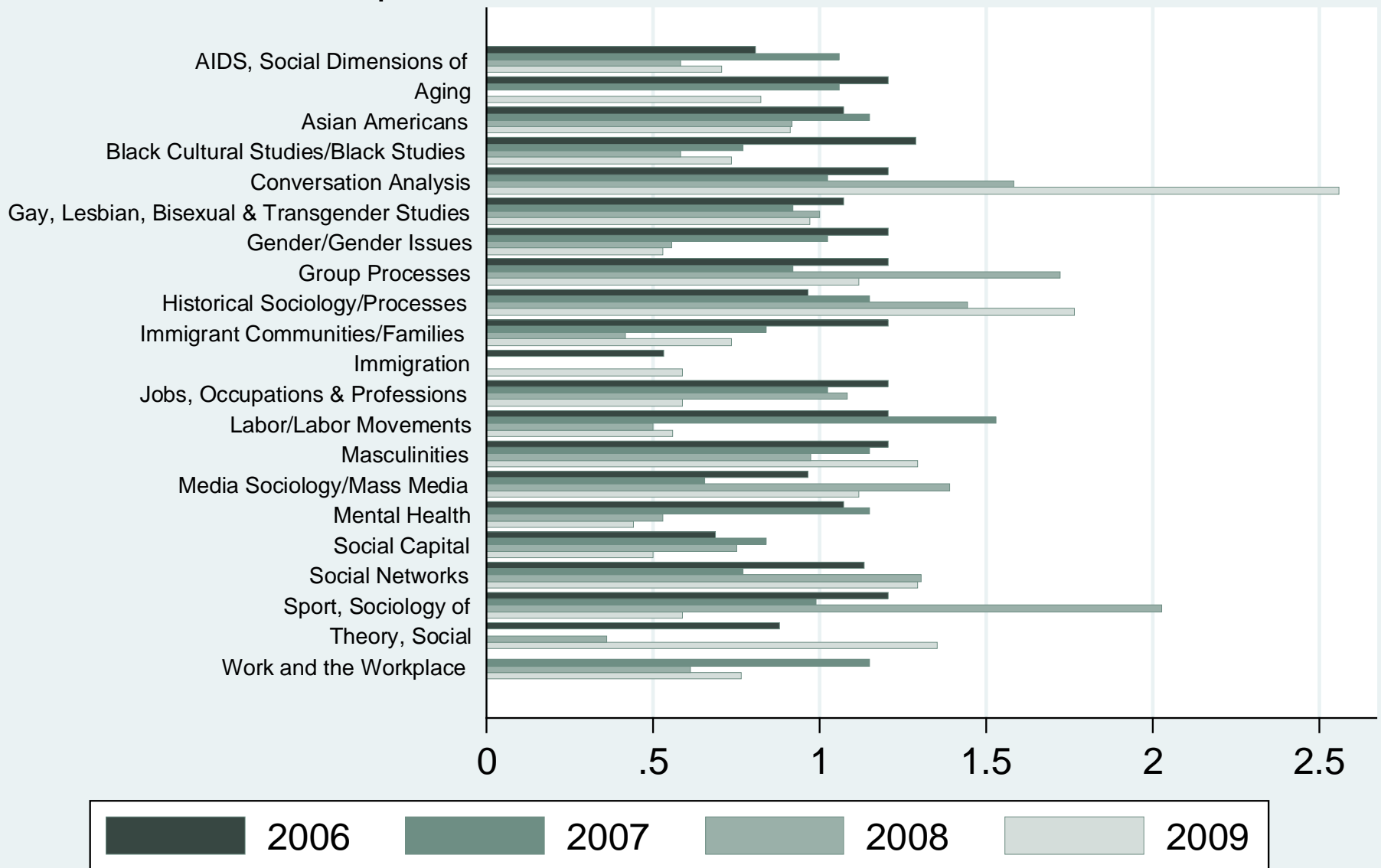
# Ratio of probability of acceptance to average for the year

## Topics with 70-100 submissions 2006-9



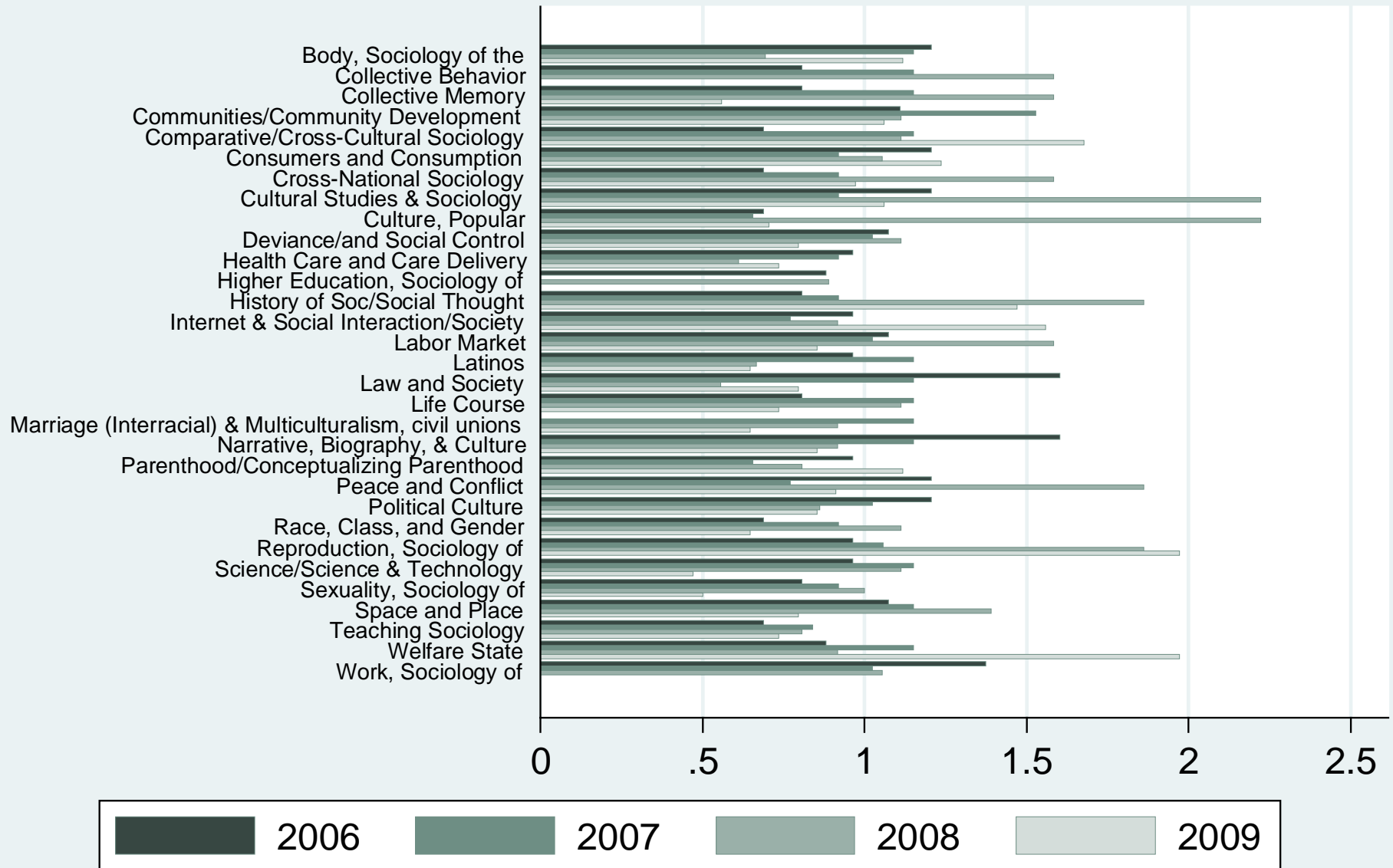
# Ratio of probability of acceptance to average for the year

## Topics with 50-69 submissions 2006-9



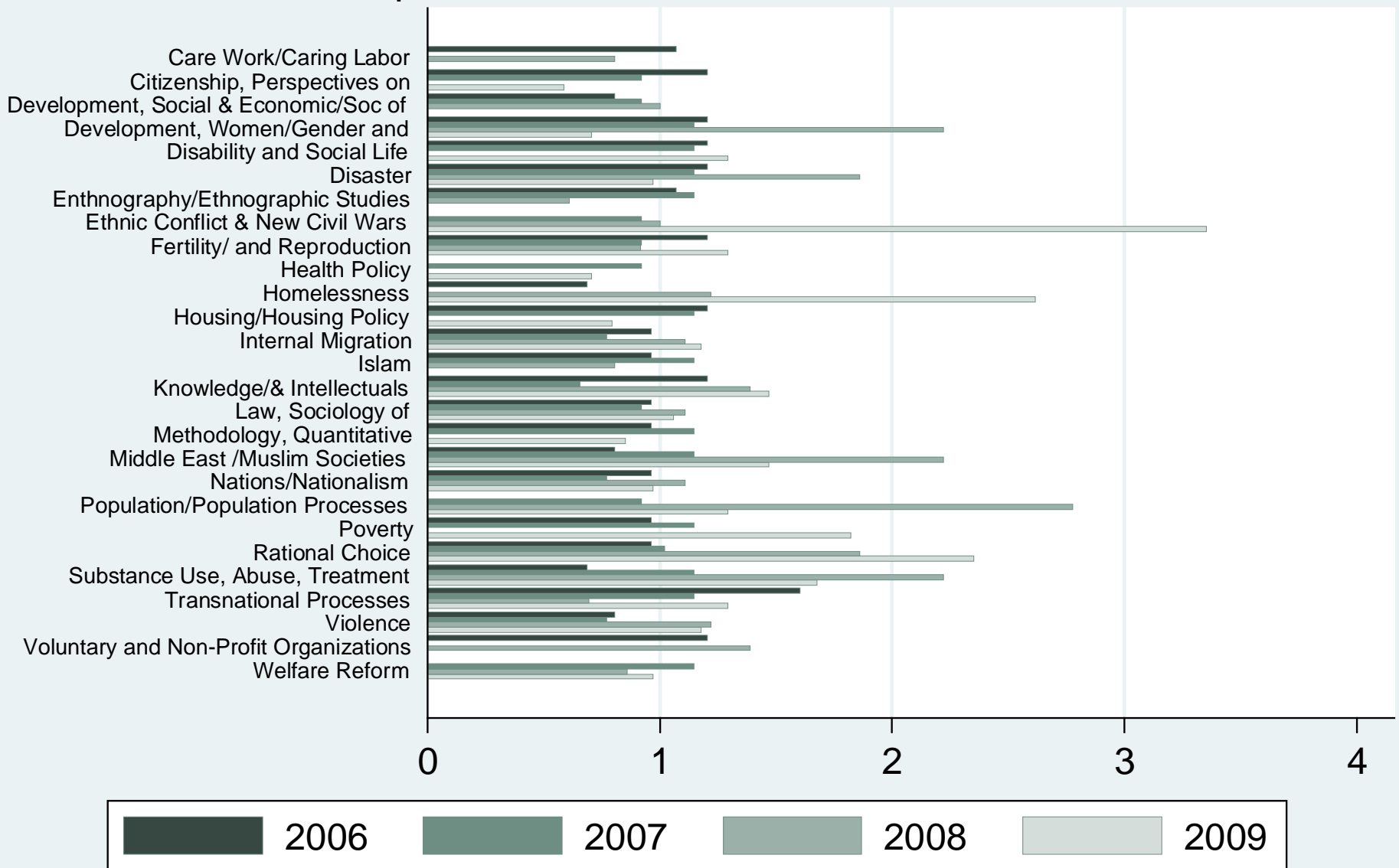
# Ratio of probability of acceptance to average for the year

## Topics with 35-49 submissions 2006-9



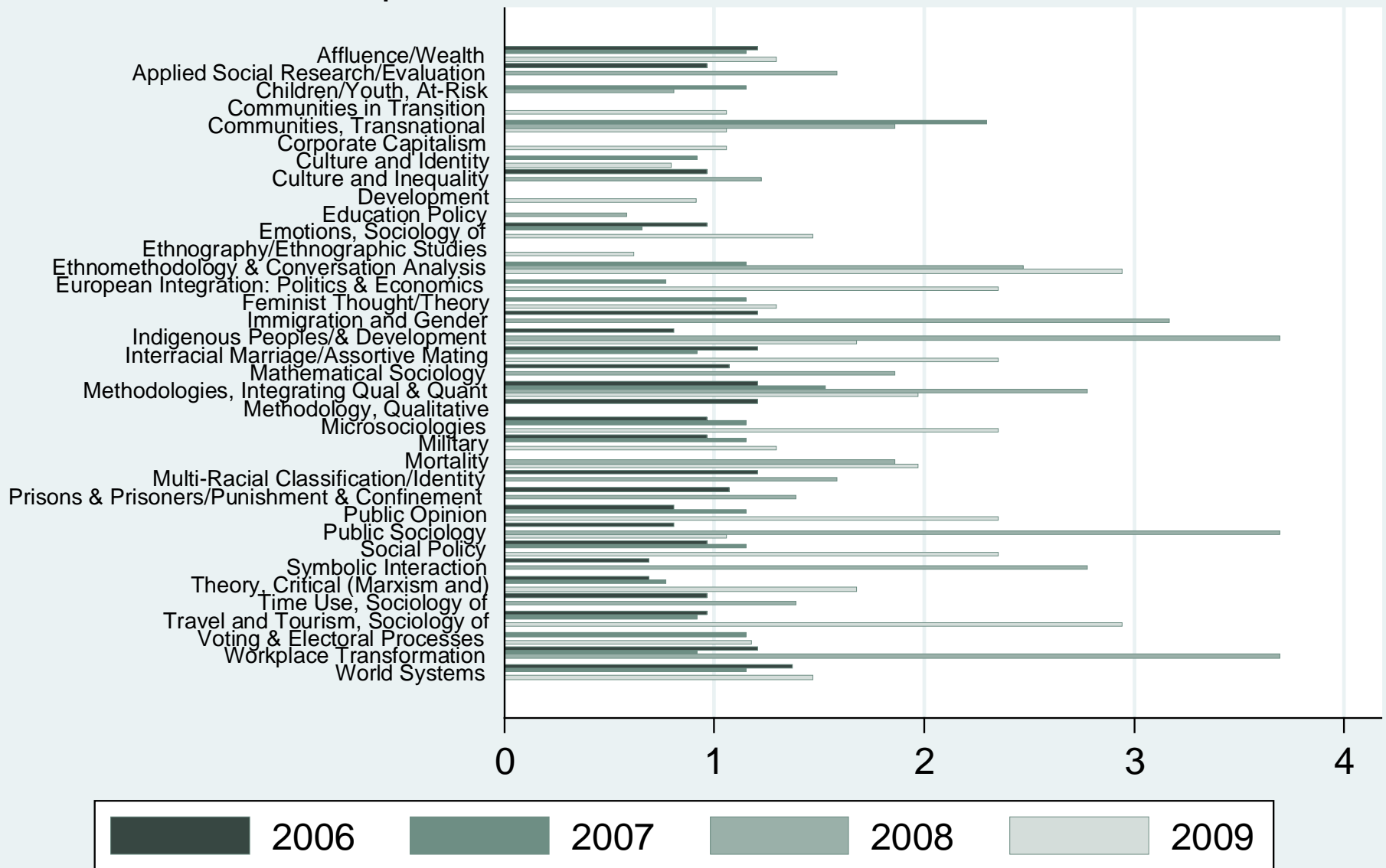
# Ratio of probability of acceptance to average for the year

## Topics with 21-34 submissions 2006-9



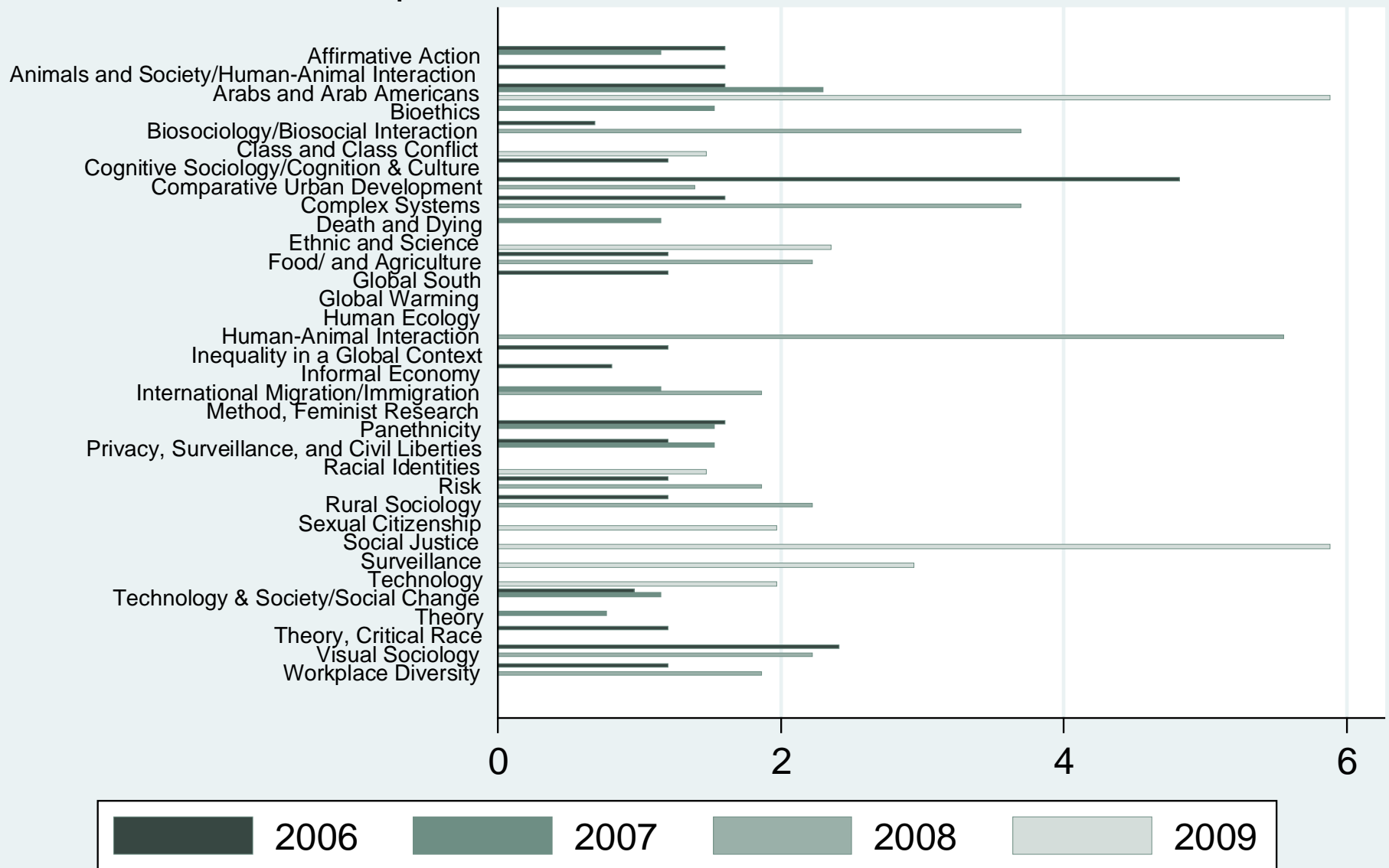
# Ratio of probability of acceptance to average for the year

## Topics with 11-20 submissions 2006-9



# Ratio of probability of acceptance to average for the year

## Topics with 1-10 submissions 2006-9





# Cases of submissions with no sessions



- **Seem problematic**
  - Collective Behavior 2008: 14 submissions! (Regrouped? Error?)
  - Methodology, Qualitative 2008: 8 submissions
  - Method, Feminist 2009: 4 submissions
- **Insufficient submissions? (irregularly offered topics)**
  - Affirmative Action 2009: 1 submission
  - Human Ecology 2008: 1 submission
  - Microsociologies 2008: 1 submission
  - Panethnicity 2008: 1 submission

# Implications for Submitters



- A lot is random, luck
- If your paper qualifies for an unusual & highly specific session, your chances may be high of getting in
- BUT it could also be a “wired” session with pre-planned papers
  - Appropriate to ask a session organizer whether your paper topic would be appropriate for the session (you are trying to get vibes about whether the session is already planned)
- Session organizer initiative and work plays a role

# Monitoring the System



- **Session organizers cannot see submissions until AFTER the submission deadline.**
- **Probability of getting in from your second choice is very low, given how the system works.**
- **It is the second choice organizer who chooses which roundtable to send your paper to!**
  - This person may have stopped looking at the web site.
  - You just **HAVE** to follow up with session organizer and/or ASA to get in a roundtable.
  - Appropriate to say what roundtable you'd like